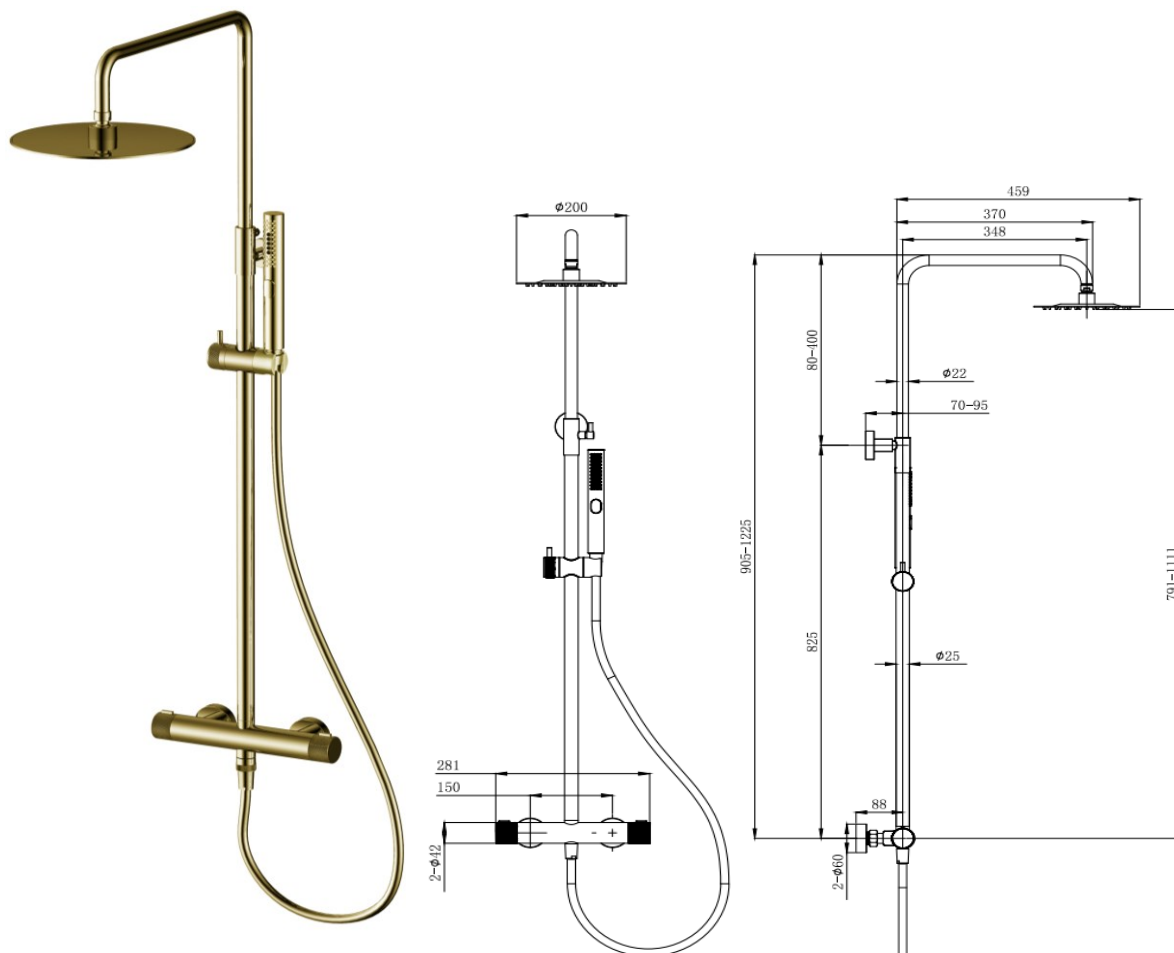


TECHNICAL DATA SHEET

ERL500BB Erla Brushed Brass Shower Valve with Riser

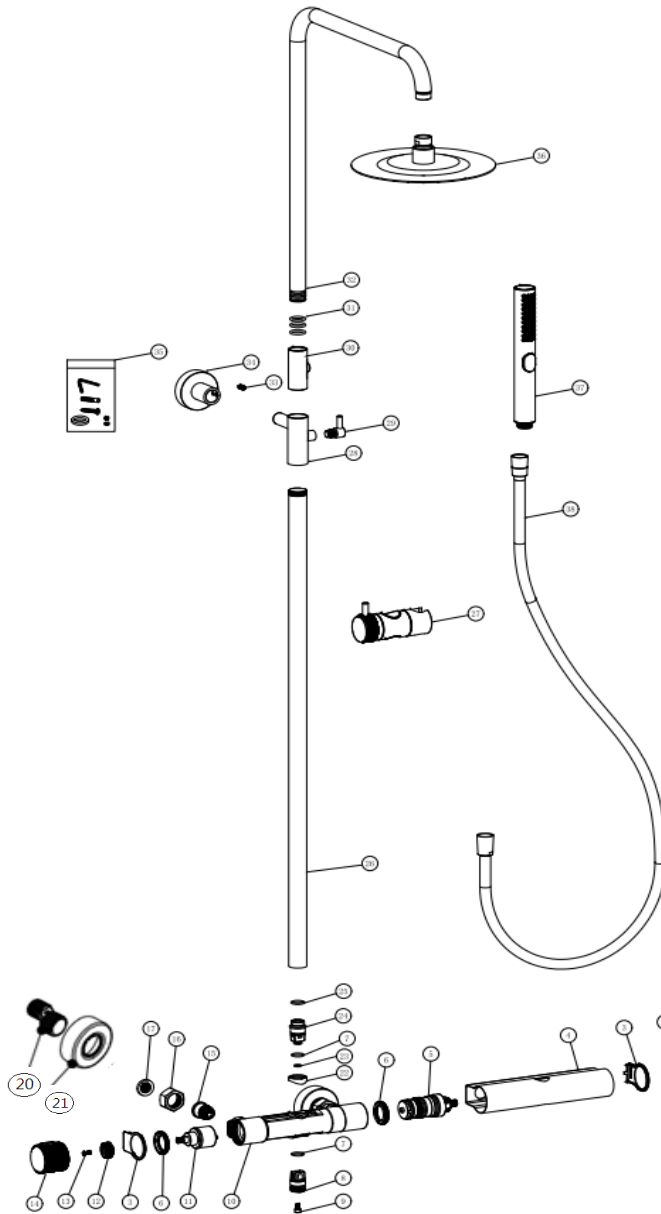
Barcode	5391541851127
Product Code	ERL500BB
Construction	Valve: High Performance Polyamide (PPA) Body & SS201 Stainless steel Casing; SS201 Stainless steel Riser rail & Base plates; Zinc-alloy Handles
Finishes	Brushed Brass
Product Type	Contemporary
Water Pressure	Min. 0.5 bar, Max. 6.0 bar
Plumbing Systems	Suitable for all plumbing systems, Hot and Cold water pressure preferably balanced; Max. supply pressure differential requirement no greater than 5:1
Standards	Complies with BSEN 1111
Certification	WRAS approved and certified (Pending)
Cartridge	WANHAI Thermostatic cartridge & Integrated Ceramic disc valve diverter
Fitting	SS304 S-Union connectors (Male thread offset 1/2 inch x 3/4" BSP with Escutcheon); Brass G1/2" BSP Male bottom outlet & G3/4" BSP Male upper outlet connection
Packaging	93 x 43.5 x 36 CM (4 Box /Carton); 91 x 42 x 8.5cm; Weight:4.875Kg/Box
Guarantee	5 years against manufacturing faults (excluding serviceable parts)
Additional Information	<ol style="list-style-type: none"> 1. Temperature: Pre-set 38°C, with push button override to 48°C 2. Automatic shut off in the event of hot or cold water supply failure 3. COOL TOUCH Bar Valve technology 4. Ultra Slim Shower head : Brushed Brass ,SS304 ,Ø250mm ,easy clean rubber nozzles 5. Shower handset : Brushed Brass , ABS, 3 mode 6. Handset holder : Brushed Brass , Brass , adjustable height 7. Shower hose : Brushed Brass ,PVC, double interlock , 1.5m , Large Ø11mm bore 8. Rail: Brushed Brass ,SS201 Stainless steel , telescopic adjustable height 1225mm



Flow Rates (Litres per minute)

System Pressure	0.1 Bar	0.2 Bar	0.3 Bar	0.5 Bar	1.0 Bar	1.5 Bar	2.0 Bar	3.0 Bar	4.0 Bar	5.0 Bar
ERL500BB Shower Head	-	-	3.2	6.3	10.1		14.3	19.2	22.4	25.1
ERL500BB Handset		-	1.8	2.7	5.8	-	8.8	11.2	13.1	14.9

The information contained on this page was correct at date of issue. Fitting dimensions are provided as a guide only. Some variation may occur due to manufacturing tolerances. We pursue a policy of continuing improvement in design and performance of our products and so reserve the right to change specifications without prior notice.



NO	Description	QTY
1	Themo- Handle	1
2	Themo- Stop ring	1
3	O-ring	2
4	Body Case	1
5	Themo- Cartridge	1
6	Lock Nut	2
7	O-ring	2
8	G1/2 Connector	1
9	Screw	1
10	Body	1
11	Diverter	1
12	Lock Nut	1
13	Screw	1
14	Diverter Handle	1
15	Check Valve	2
16	G3/4 Nut	2
17	G3/4 Washer	2
18	Wall Brucket Case	2
20	S-union	2
21	G1/2 Easy fit Wall Brucket	2
22	Collar	1
23	O-ring	1
24	Upper outlet connector	1
25	O-ring	1
26	Rail	1
27	Handset holder	1
28	Rail connector body	1
29	Rail connector handle	1
30	Rail connector	1
31	O-ring	3
32	Upper Rail	1
33	Screw	2
34	Wall Bracket	1
35	Fitting kit	1
36	Shower Head	1
37	Handset	1
38	Hose	1

			Material:	Assembly	Size:	A4
			Scale:	None	Issue No:	01
Drawn by:	Konstantine	(Date:D/M/Y) 28/06/2021				
Checked by:	Lee	28/06/2021				
Approved by:	T. K.	28/06/2021				
Drawing Name:						