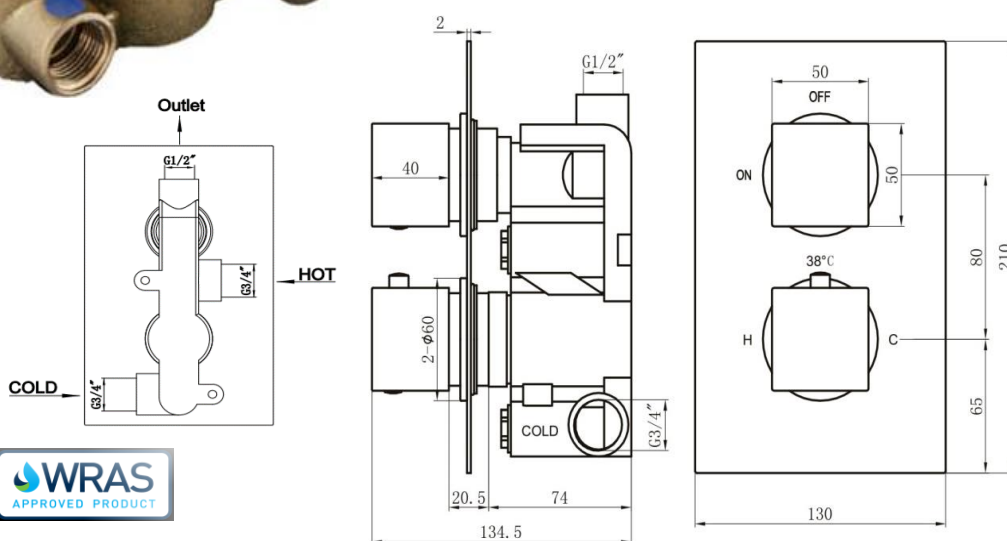
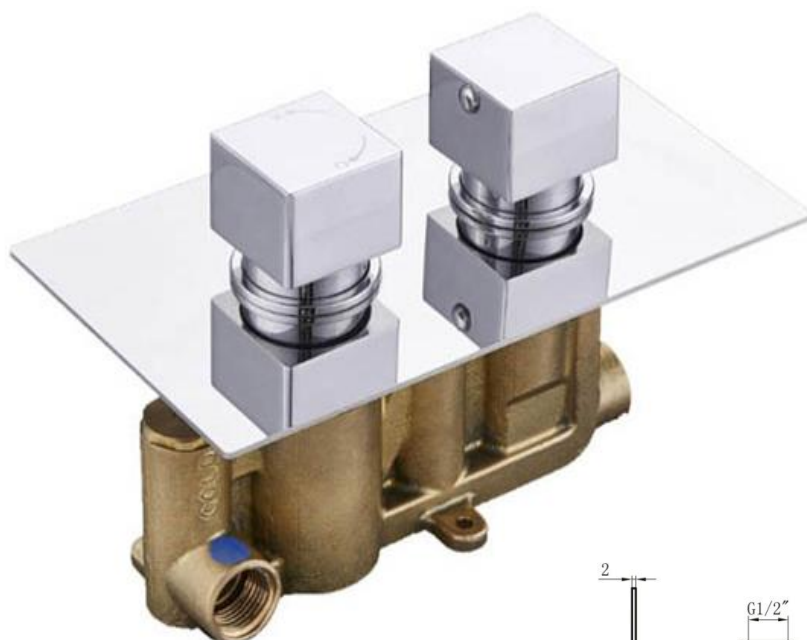


TECHNICAL DATA SHEET

VOI600 Single Outlet Concealed Thermostatic Mixer Valve

Barcode	7081245293818
Product Code	VOI600
Construction	Brass Body (CuZn38b18)
Finishes	Chrome plated to BS EN 248
Product Type	Contemporary
Water Pressure	Min. 0.5 bar, Max. 7.0 bar
Plumbing Systems	Suitable for all plumbing systems, preferably balanced Min. supply pressure differential requirement is 5:1
Standards	Complies with BSEN 1111
Certification	WRAS (1601964) and TMV2 (NSF1917/1017) approved and certified
Cartridge	Thermostatic
Fitting	Inlet: 3/4" Female Outlet: 1/2" Female
Packaging	34 x 25 x 32cm / carton (4 boxes), Dimension: 33 x 15 x 12cm / box; Weight: 2.85Kg / box
Guarantee	10 years against manufacturing faults (excluding serviceable parts)
Additional Information	1. Temperature: Pre-set 38°C, with push button override to 48°C 2. Automatic shut off in the event of hot or cold water supply failure 3. Easy accessible check valve



Flow Rates (Litres per minute)

System Pressure	0.1 Bar	0.2 Bar	0.3 Bar	0.5 Bar	1.0 Bar	1.5 Bar	2.0 Bar	3.0 Bar	4.0 Bar	5.0 Bar
VOI600	-	7.3	-	10.5	14.5	18.0	21.0	26.0	-	-

The information contained on this page was correct at date of issue. Fitting dimensions are provided as a guide only. Some variation may occur due to manufacturing tolerances. We pursue a policy of continuing improvement in design and performance of our products and so reserve the right to change specifications without prior notice.